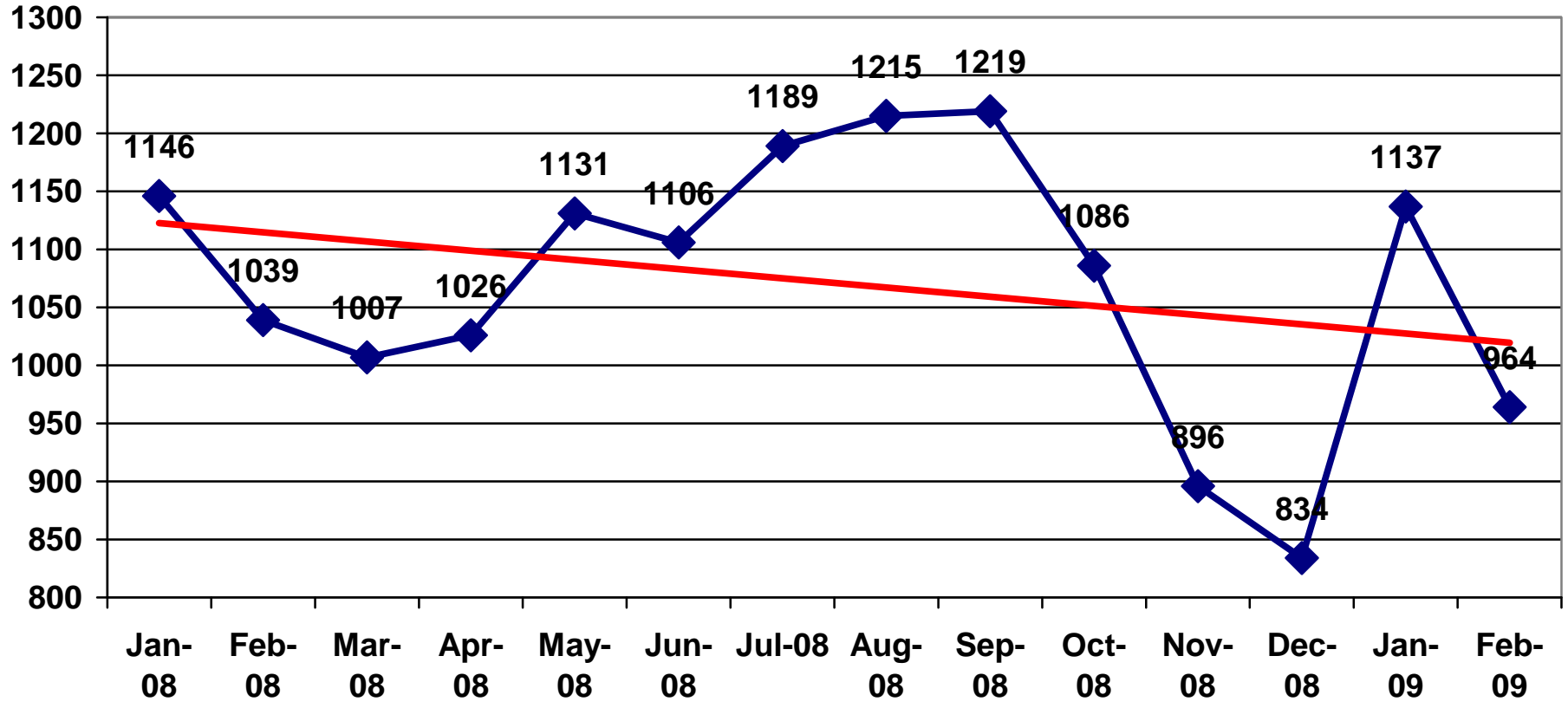
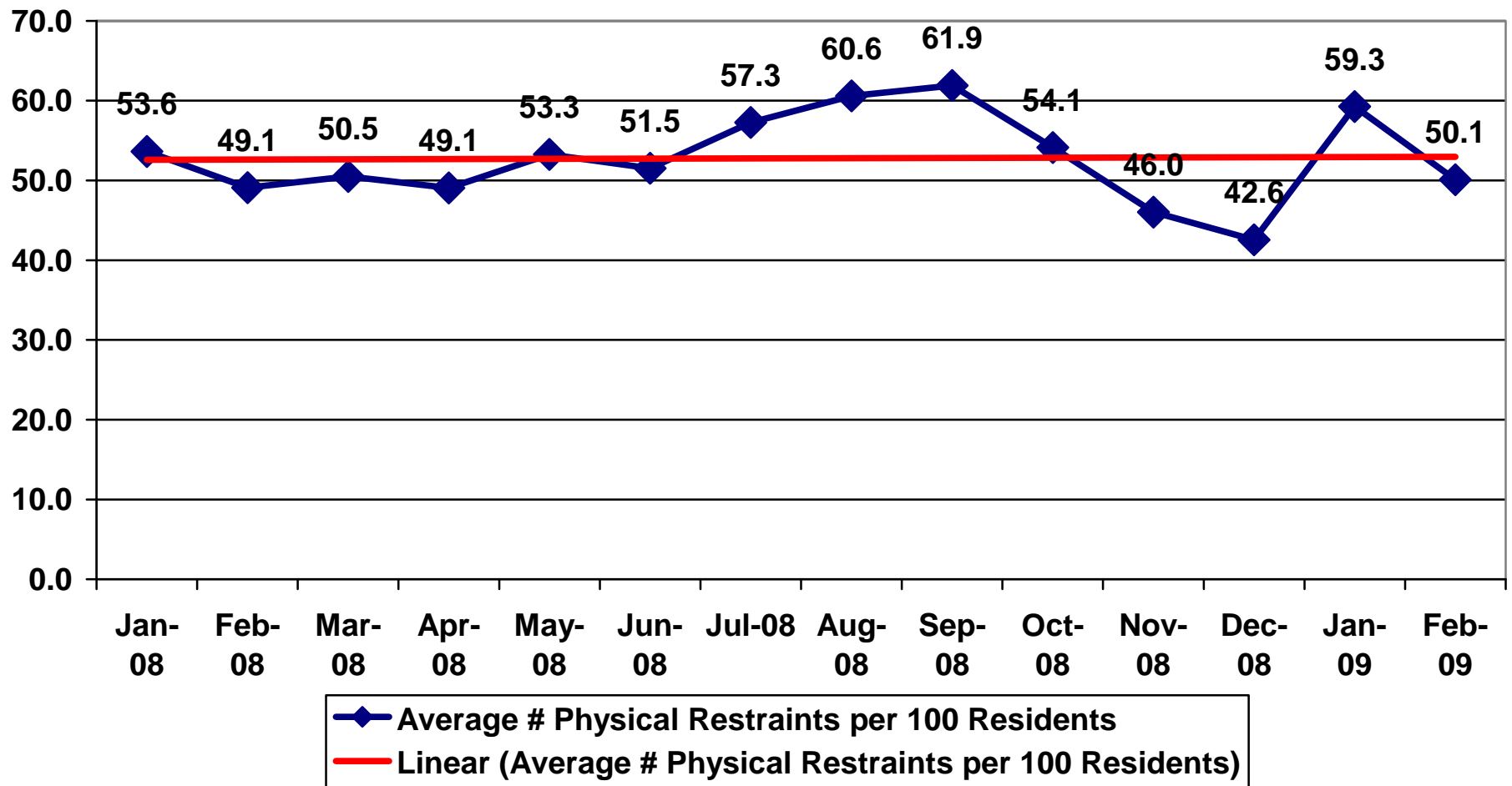


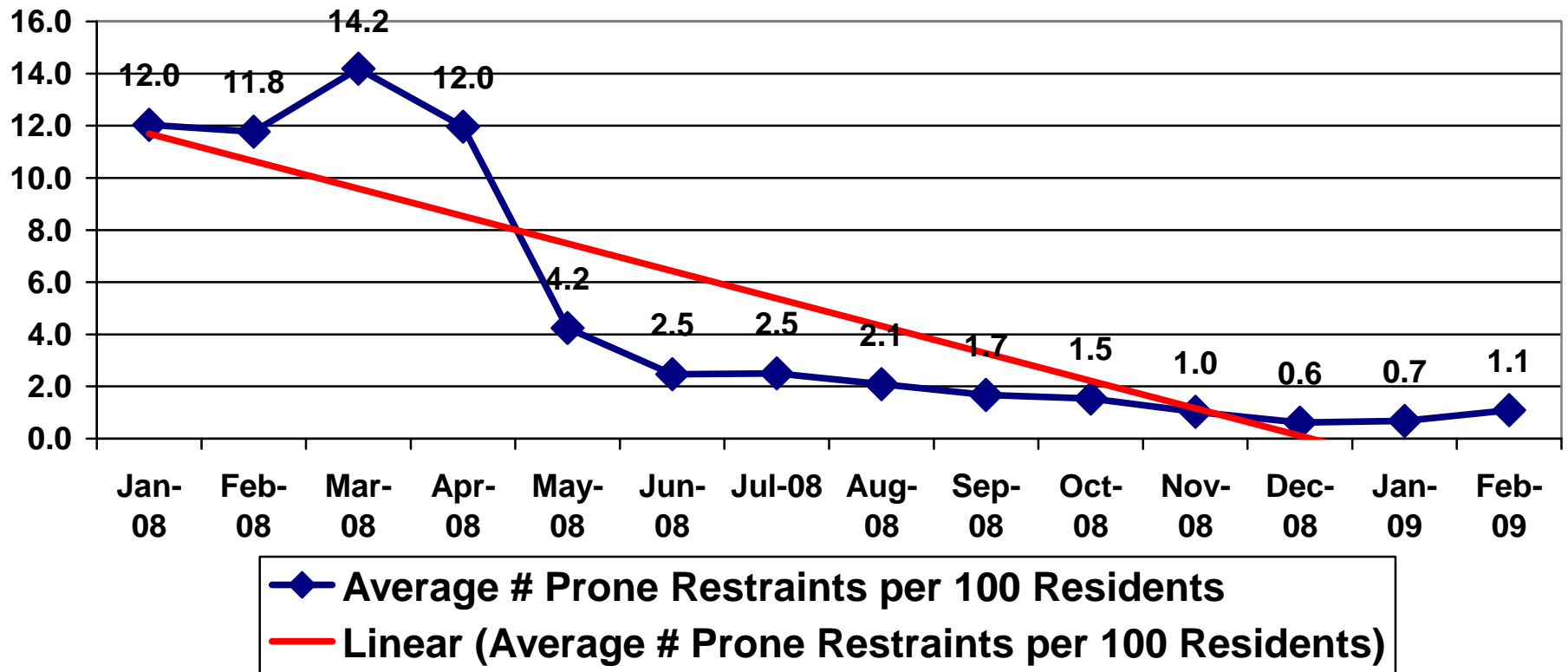
Sanctuary Trends: January 2008 through February 2009



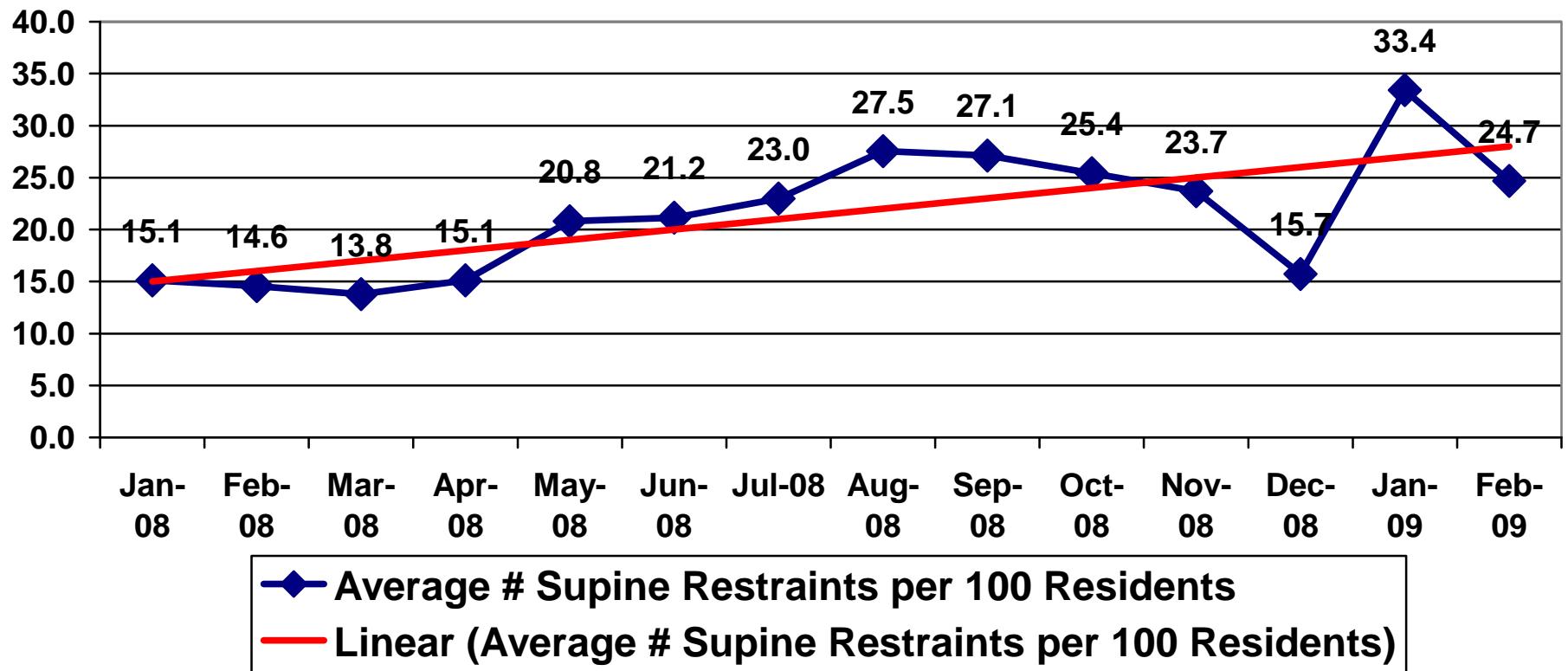
◆ Total # Physical Restraints — Linear (Total # Physical Restraints)



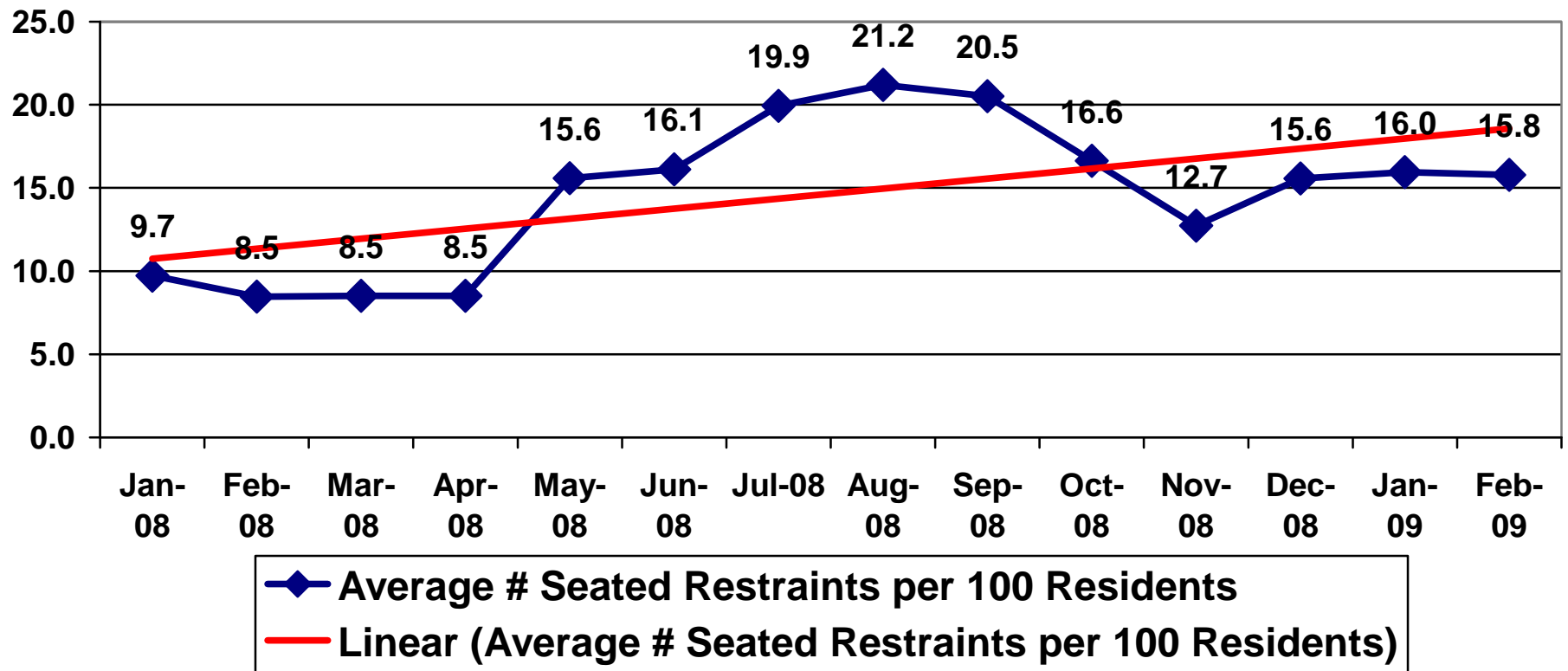
NOTE: In general, overall trend of physical restraints has remained flat, though Sep to Dec 2008 did have a downward trend.



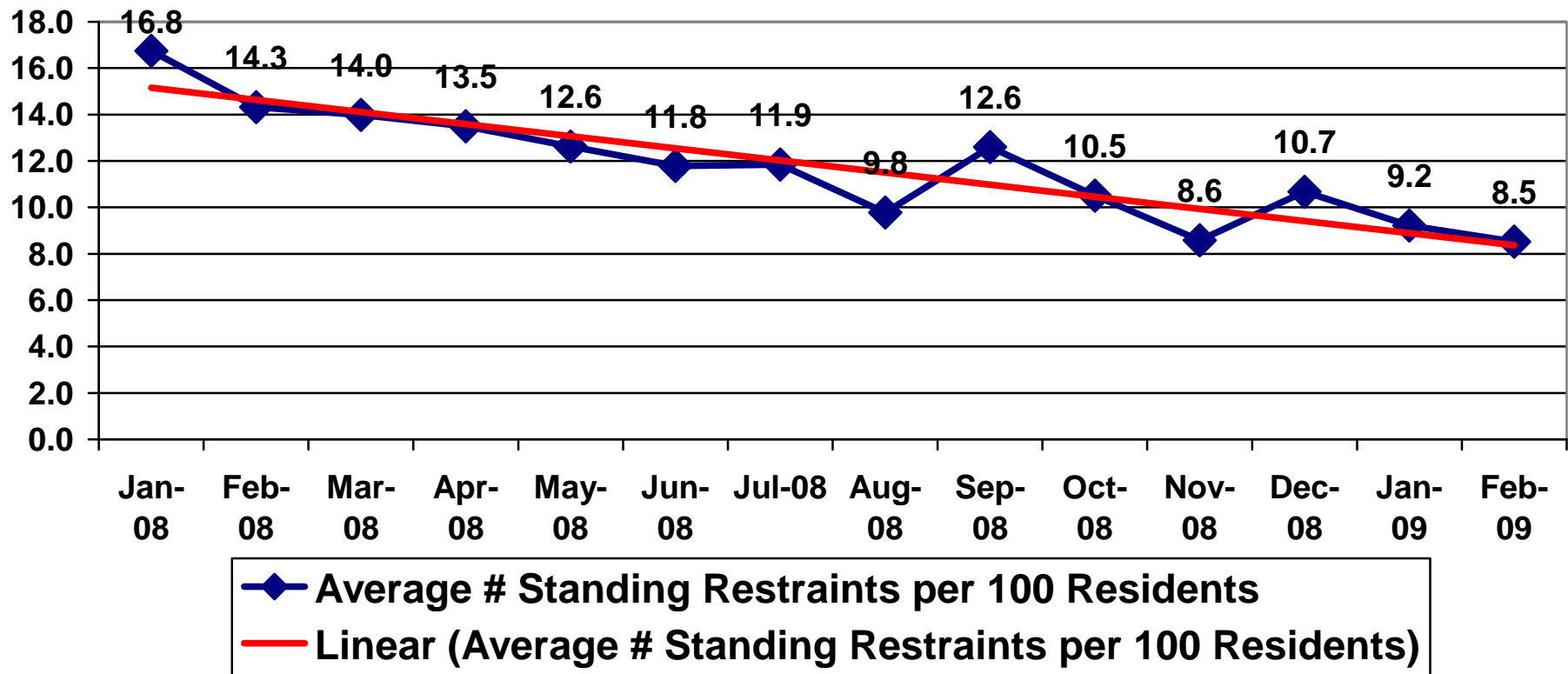
NOTE: Prone restraints have strongly trended down, though are hovering around 1 out of every 100 children receiving a prone restraint each month.



NOTE: Overall, supine restraints have trended up.

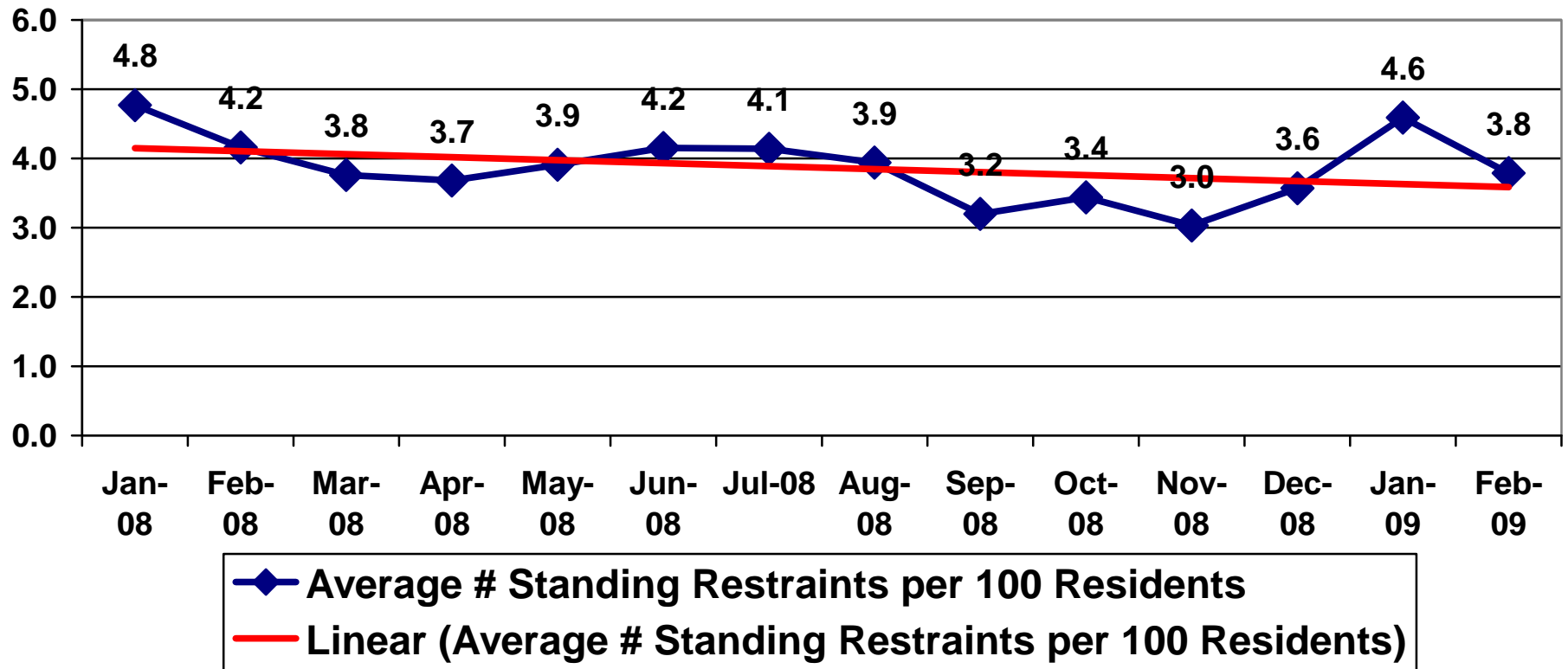


NOTE: Overall, seated restraints have trended up.

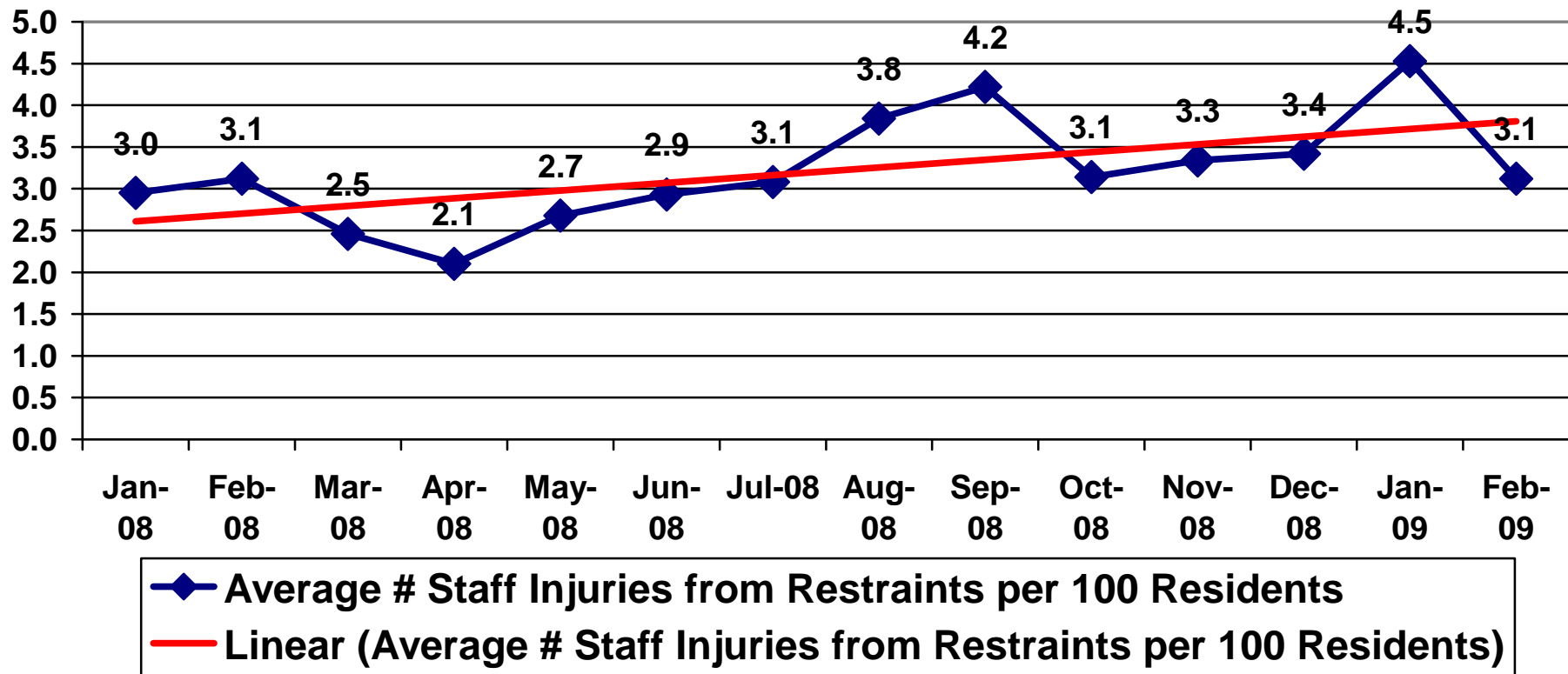


NOTE: Standing restraints have trended down.

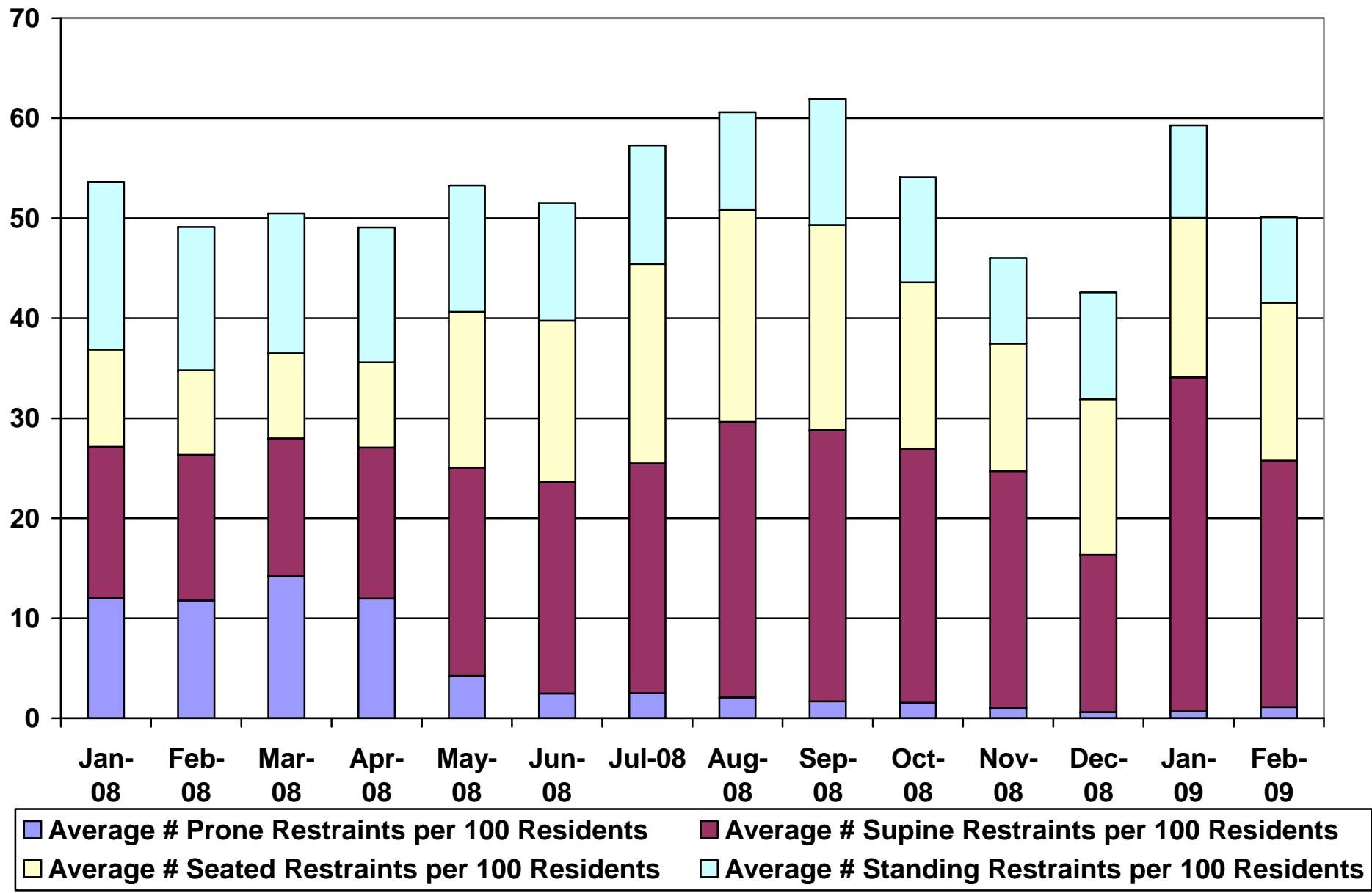
So overall, rate of physical restraints has remained at around the same level, but prone and standing restraints have trended down while seated and supine restraints have trended up.

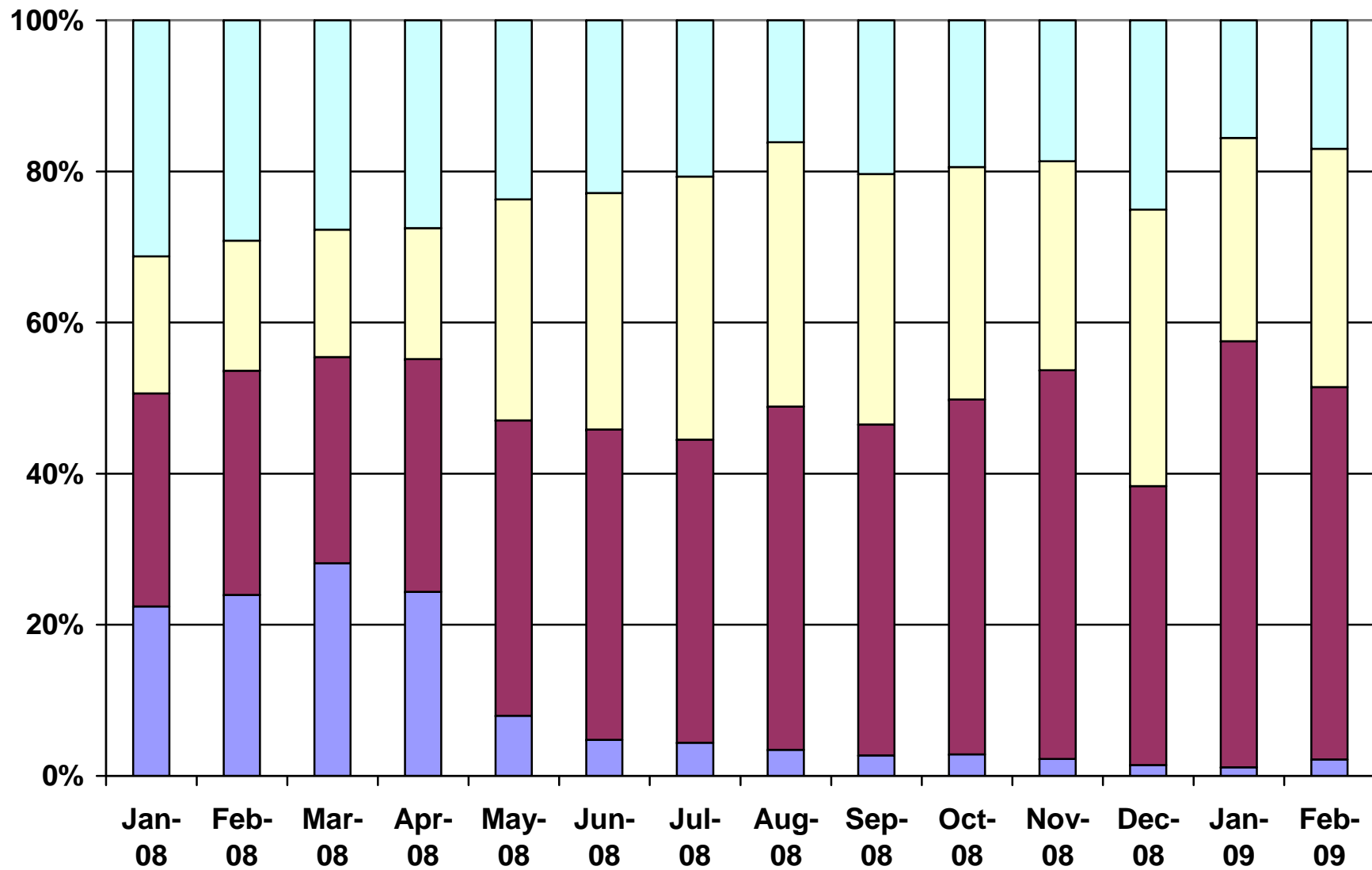


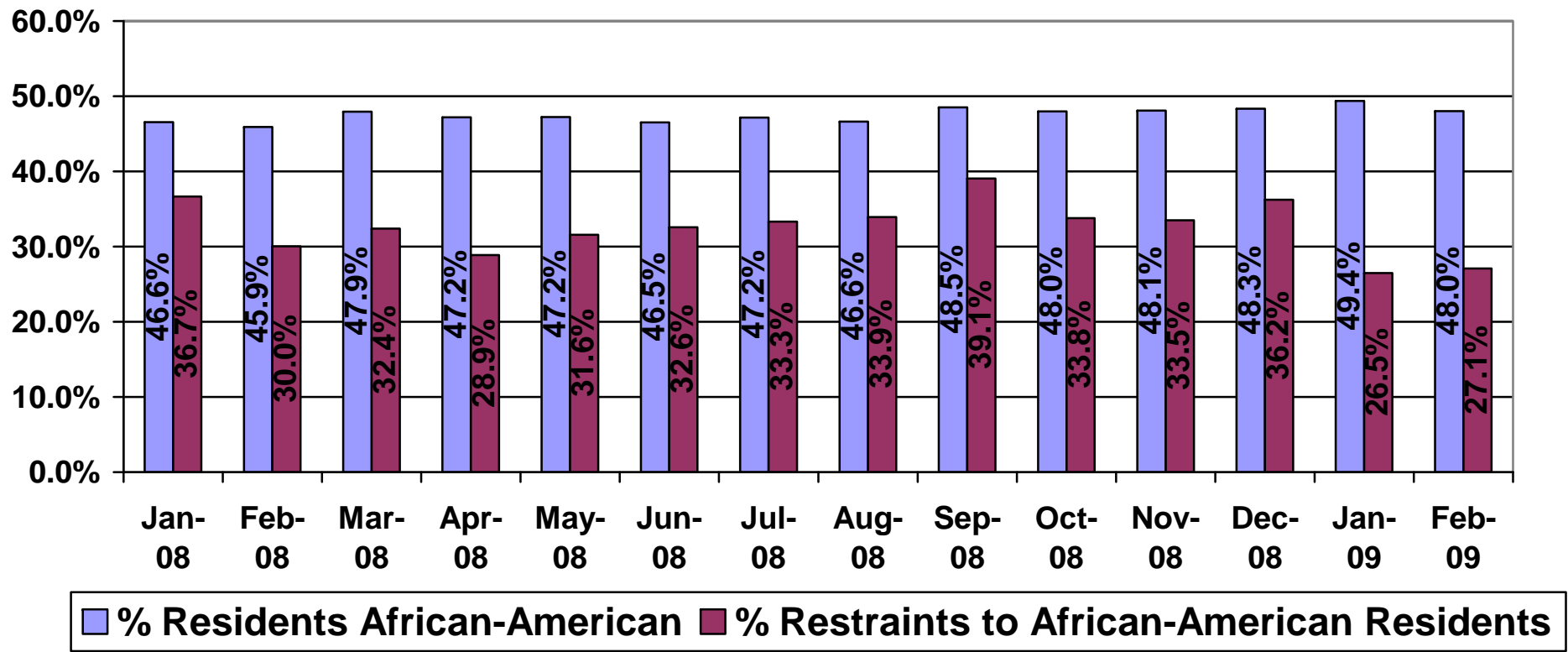
NOTE: Resident injuries due to restraints has trended down slightly.



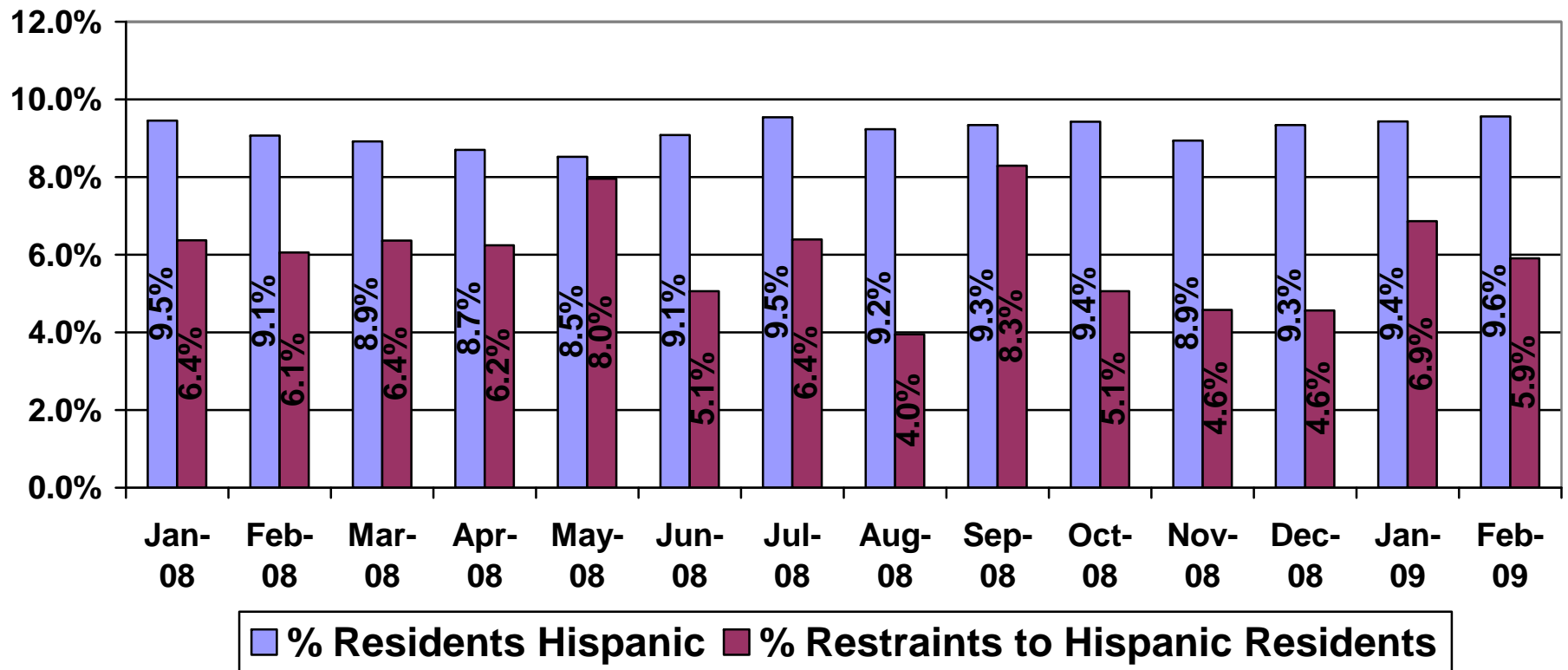
NOTE: Staff injuries from restraints has trended up.



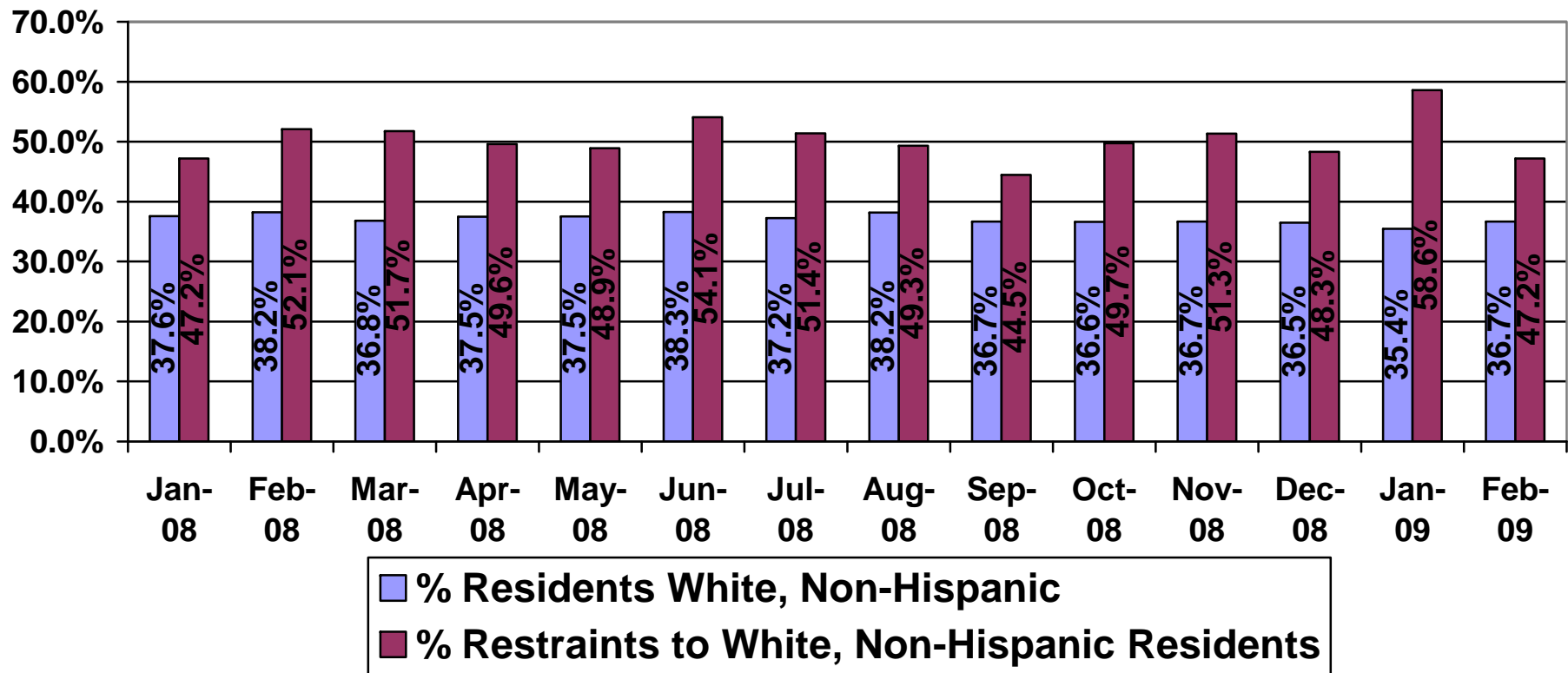




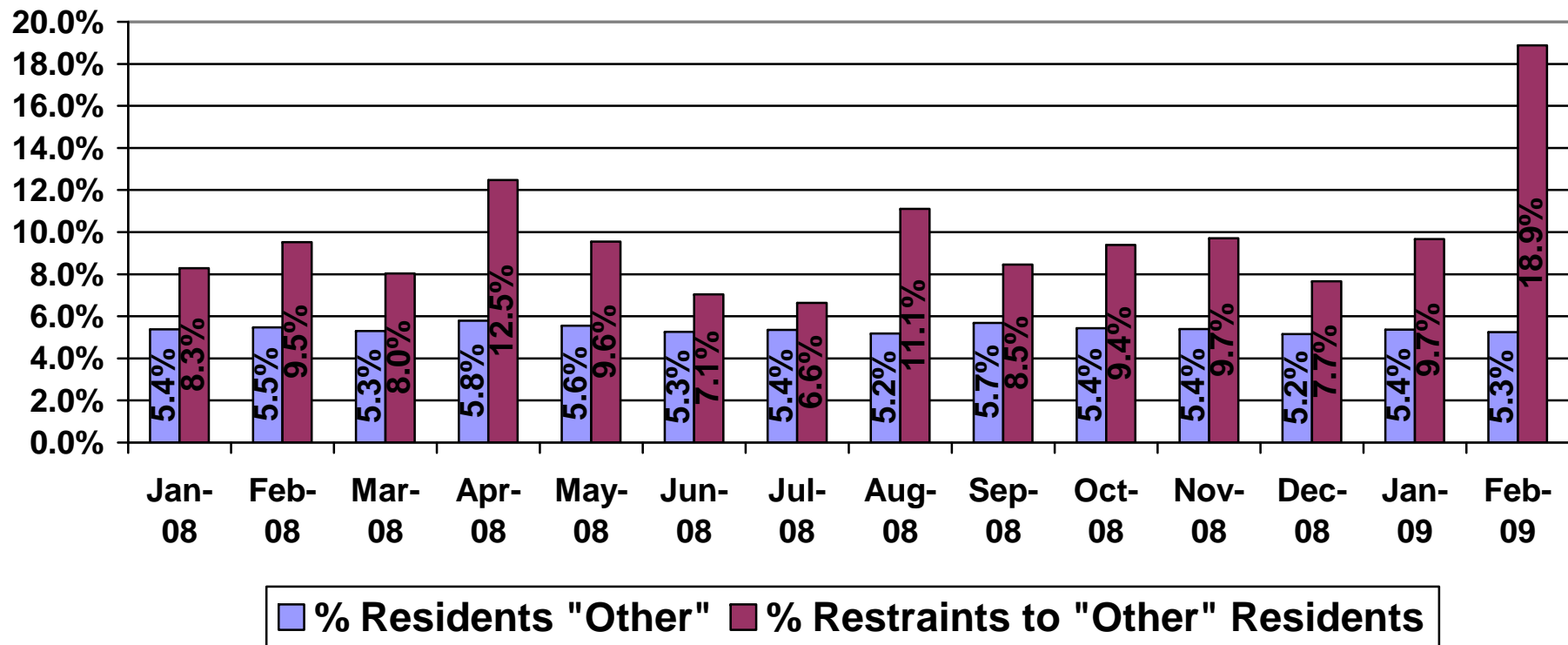
NOTE: Proportionally, African American residents receive fewer restraints than other racial/ethnic groups.



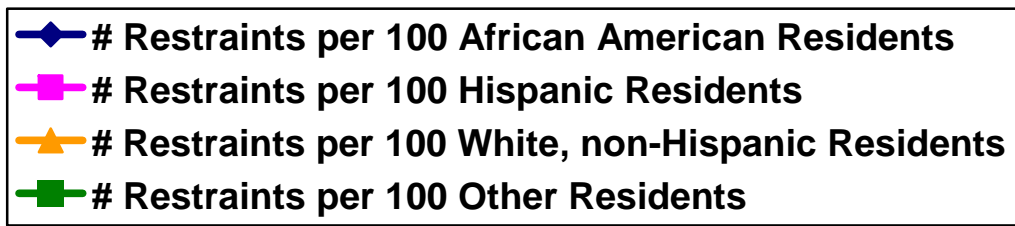
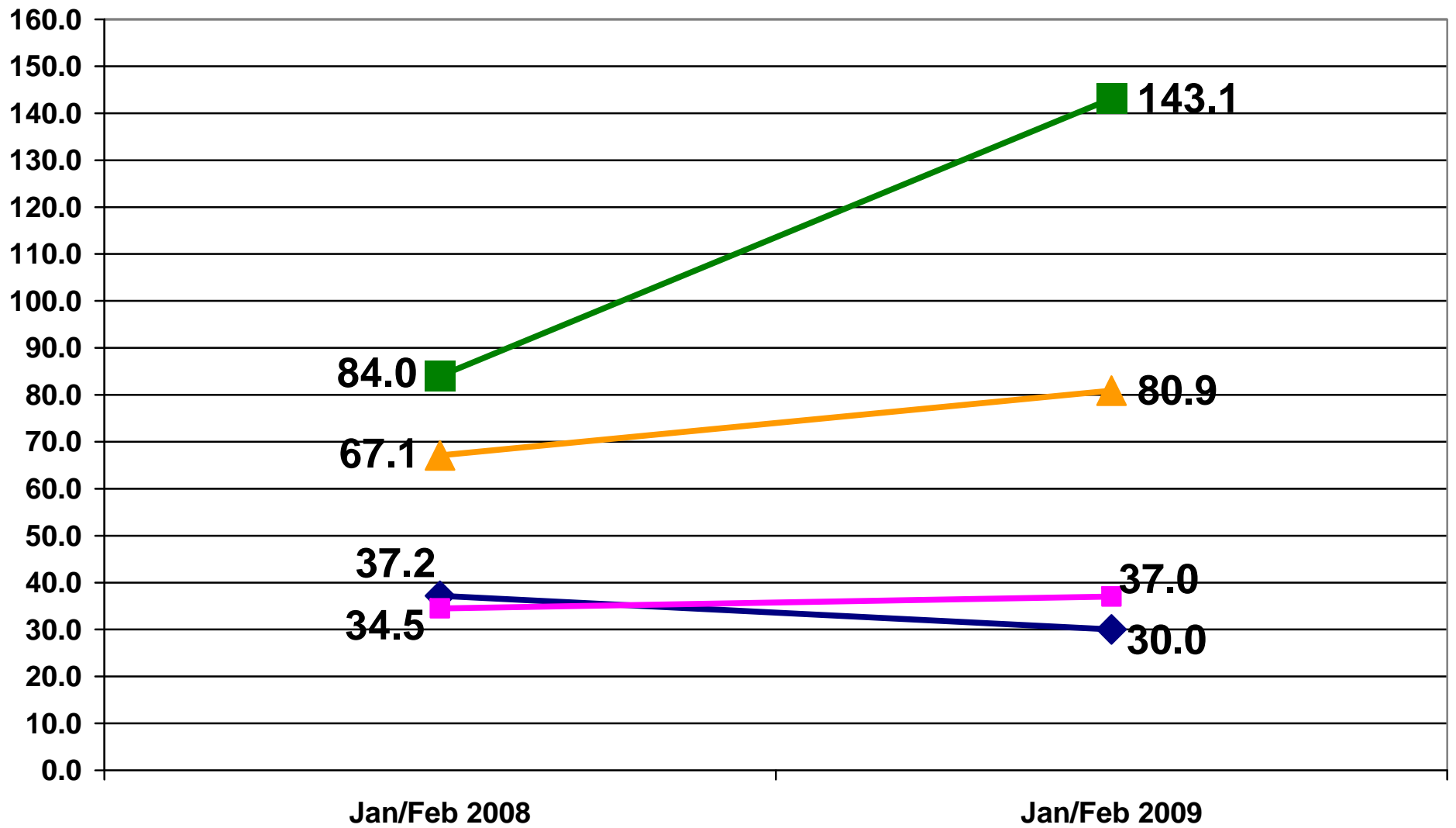
NOTE: Proportionally, Hispanic residents receive fewer restraints than other racial/ethnic groups.

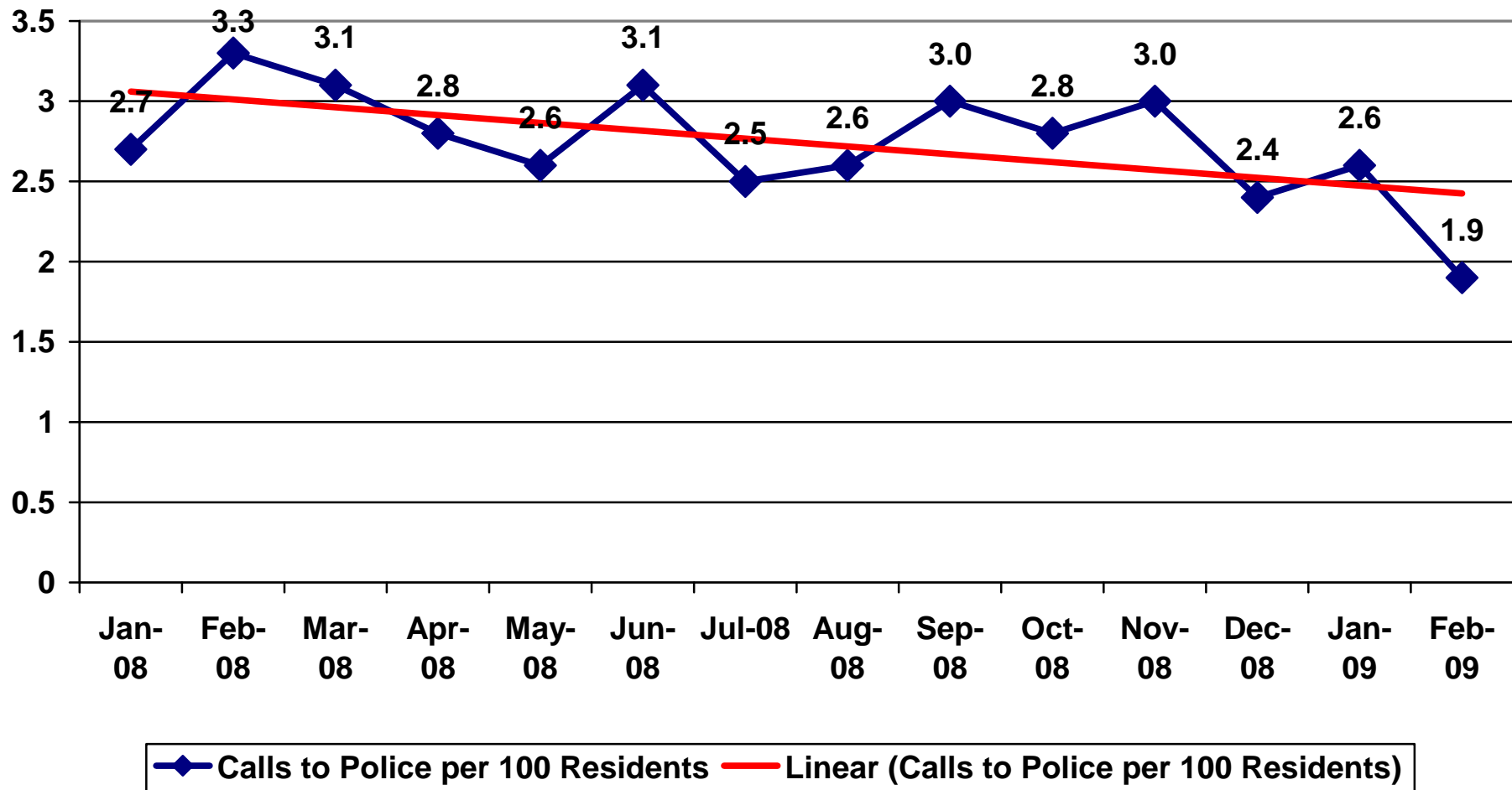


NOTE: Proportionally, white non-Hispanic residents receive more restraints than other racial/ethnic groups.

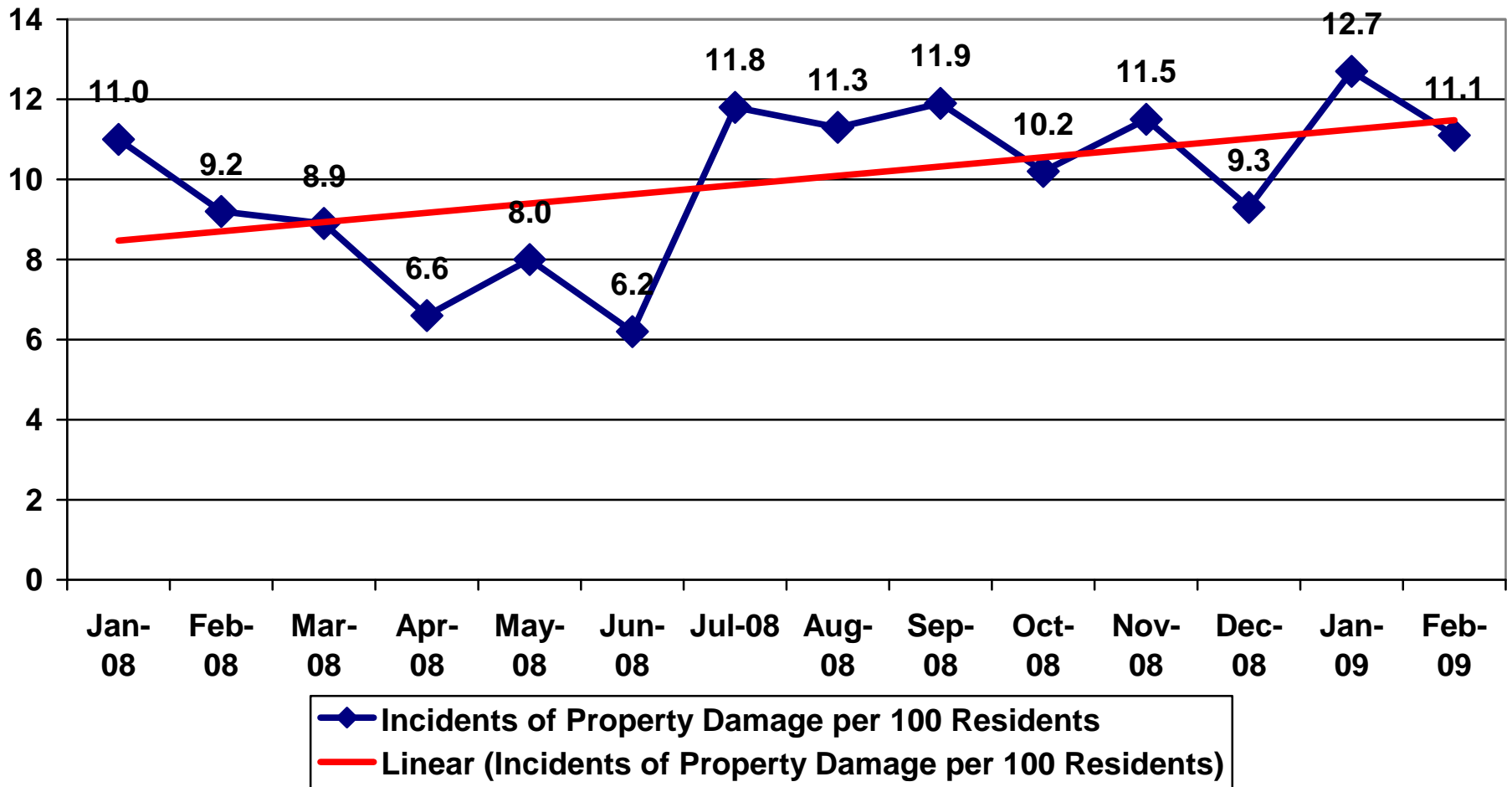


NOTE: Proportionally, "other" residents receive more restraints than other racial/ethnic groups.

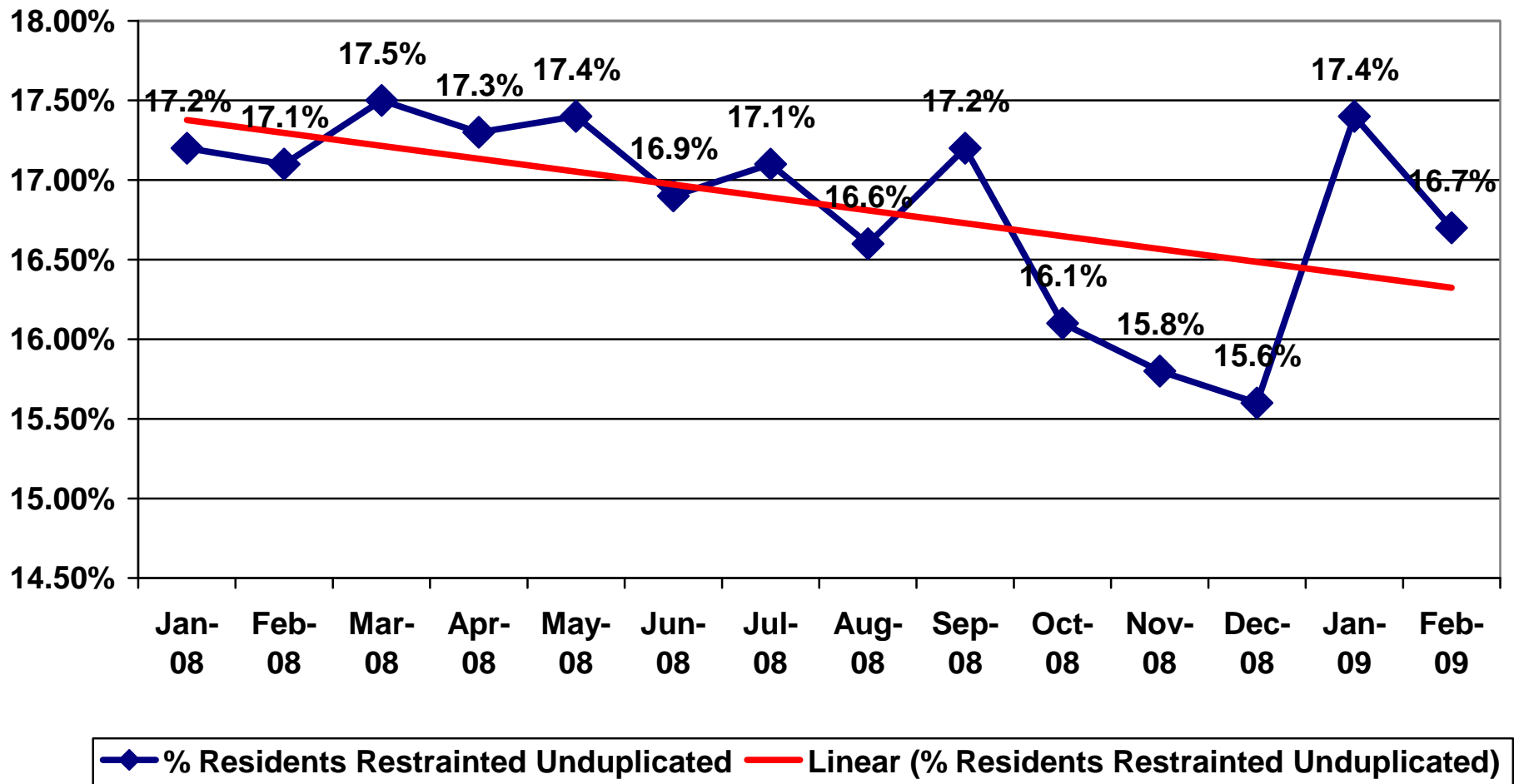




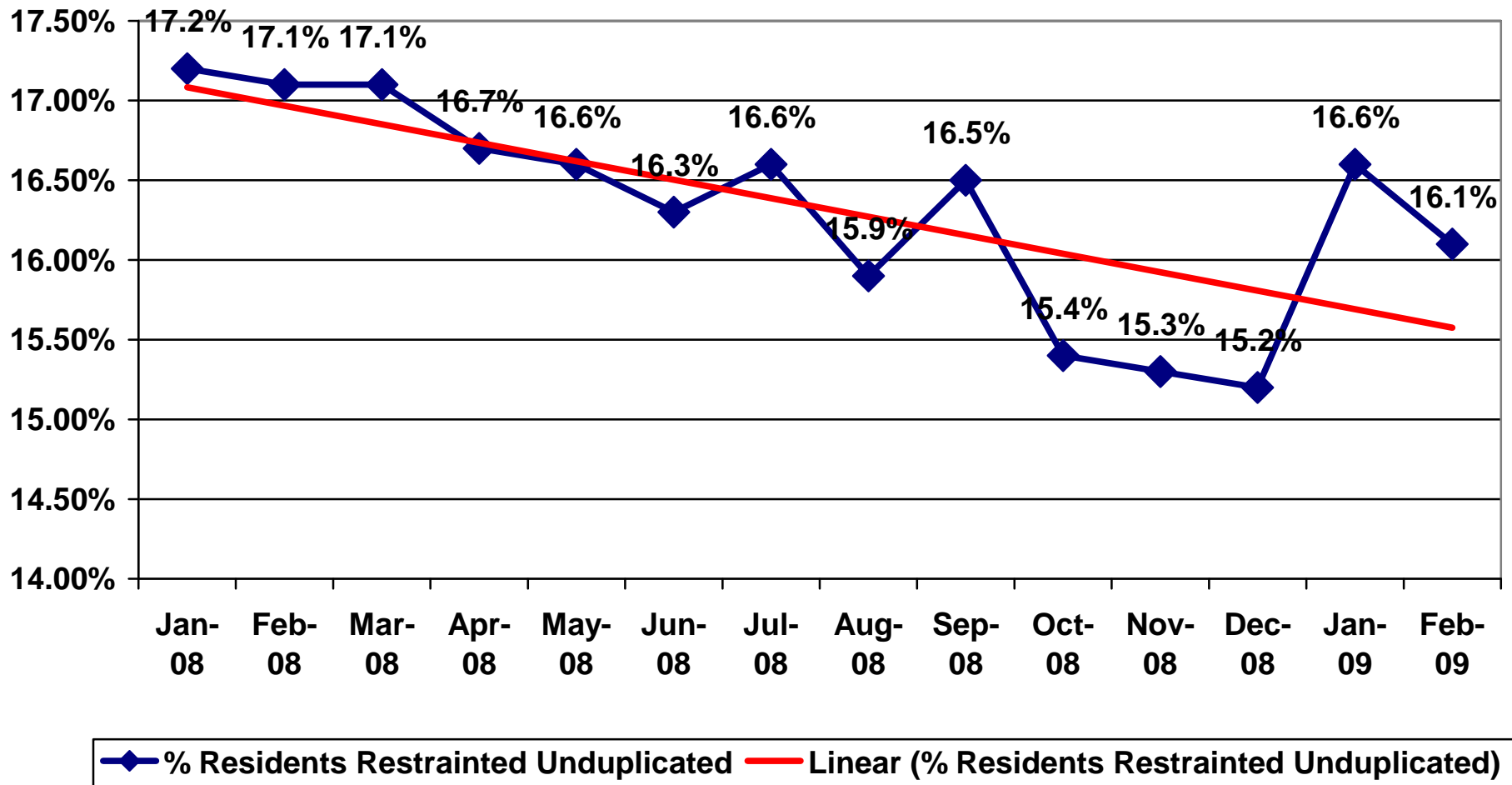
NOTE: Overall, calls to police have trended down, mainly due to a low in February 2009. From January 2008 to January 2009, held fairly steady in the 2.5 to 3.5 range.



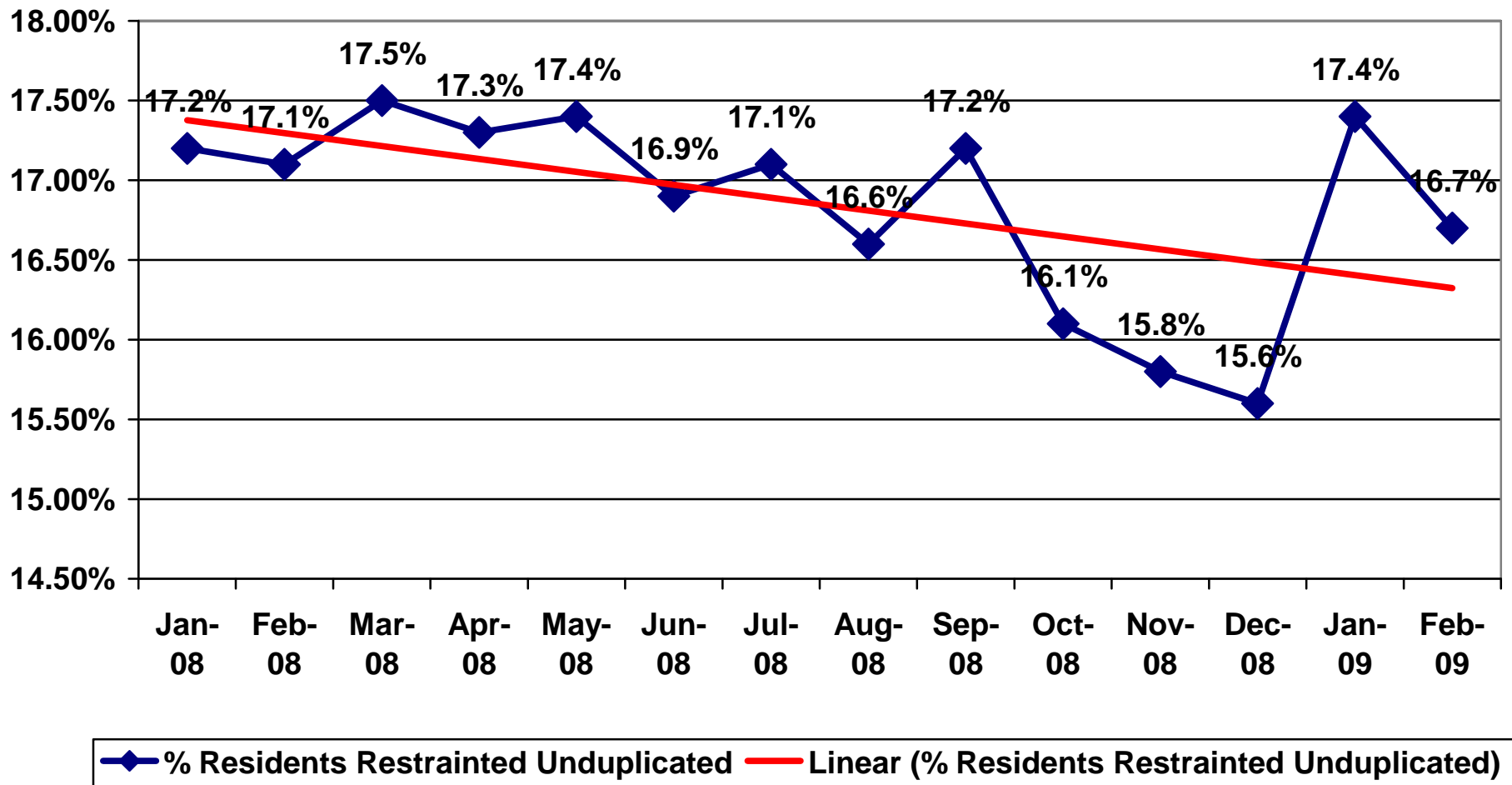
NOTE: Incidents of property damage have trended up.



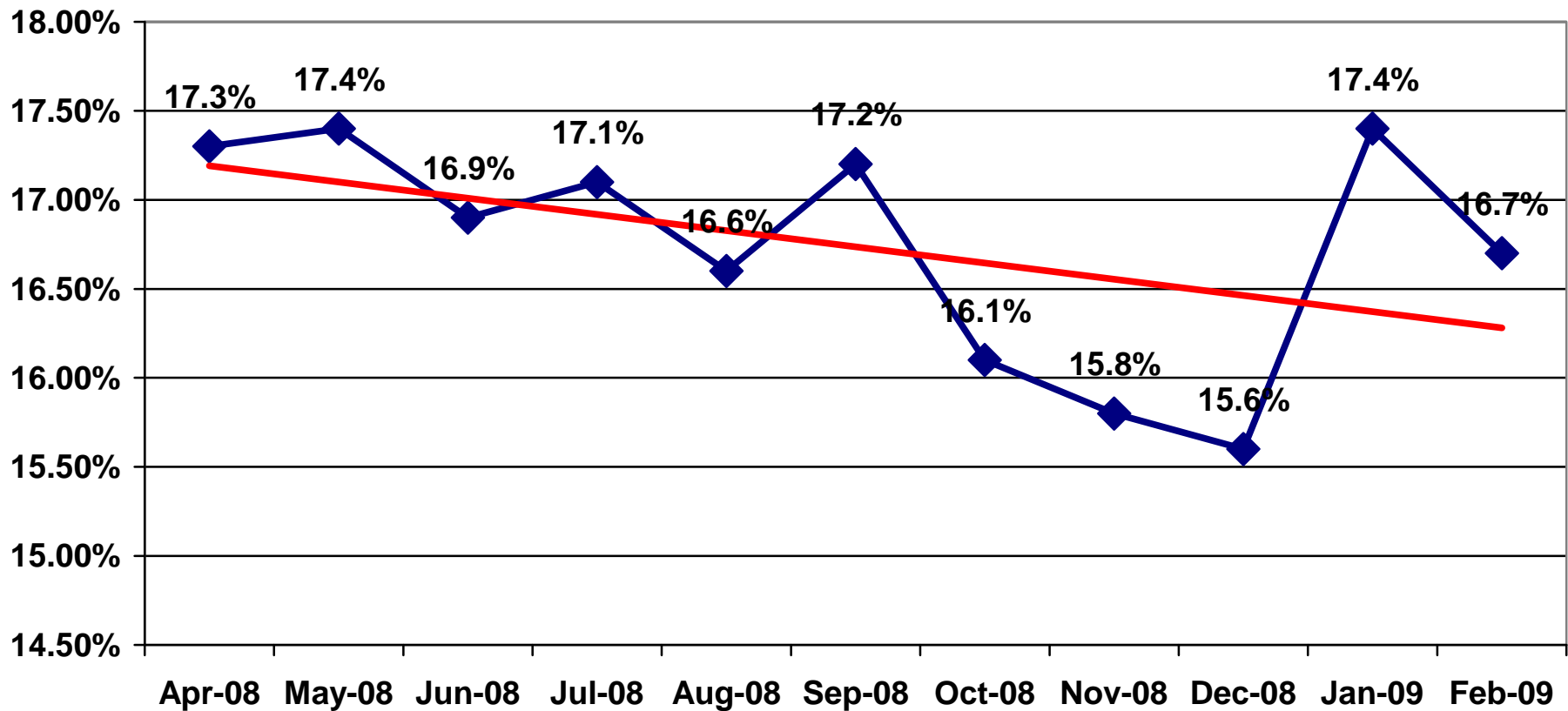
NOTE: Percent of all residents restrained has trended down.



WITHOUT NORTHWESTERN AND VISIONQUEST

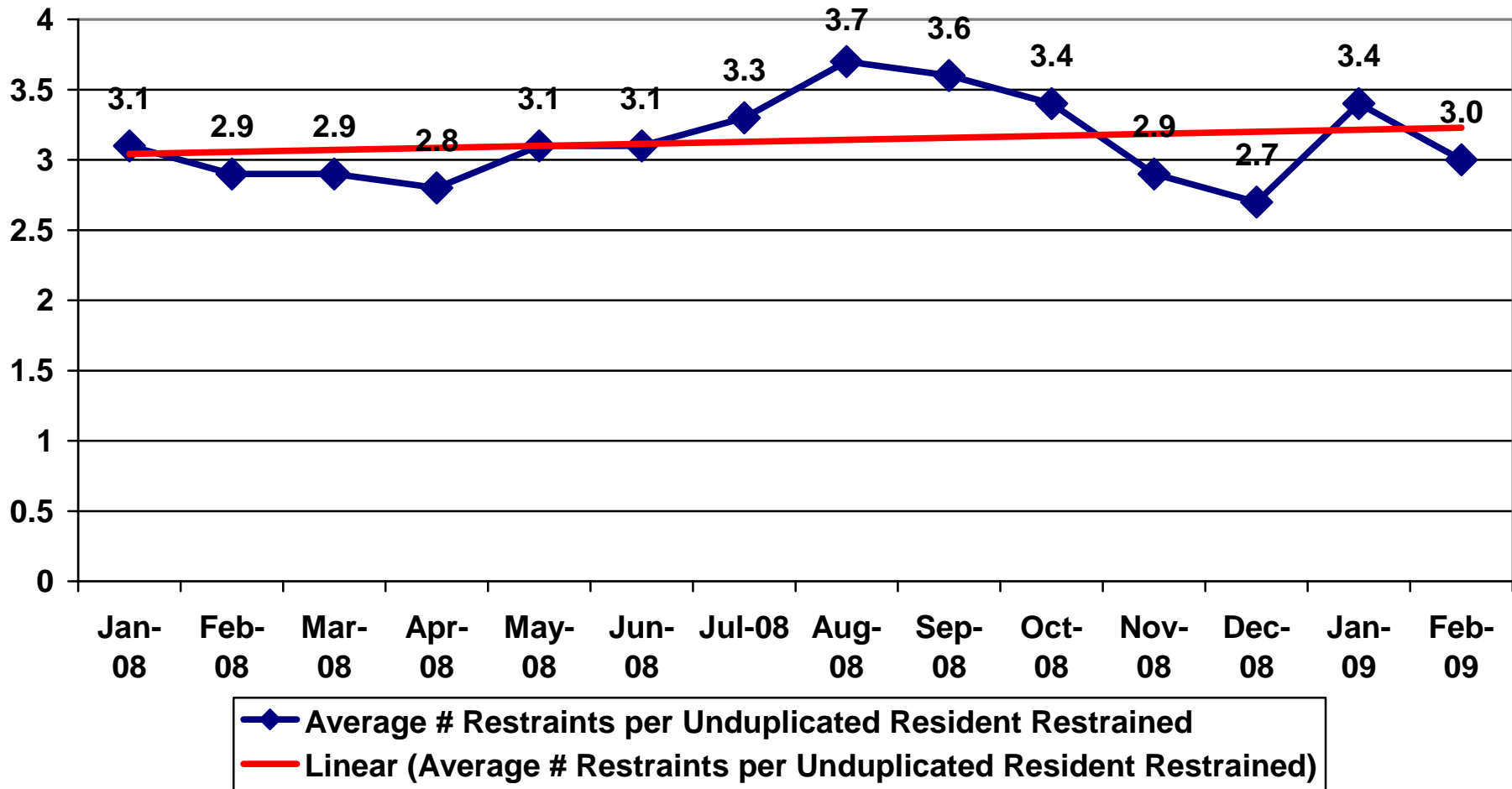


WITHOUT NORTHWESTER JAN, FEB, MARCH AND VISIONQUEST JAN, FEB

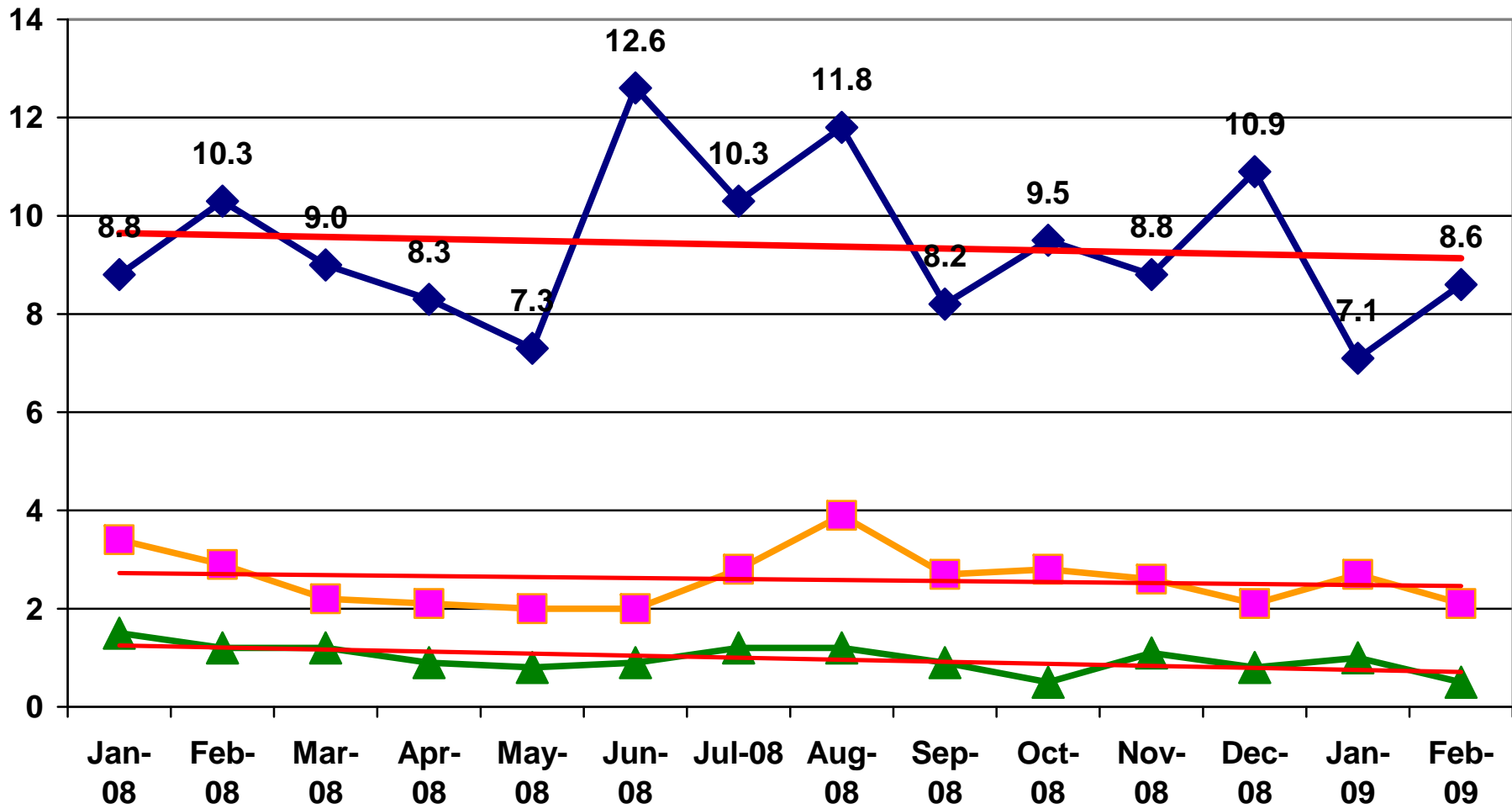


◆ % Residents Restrained Unduplicated — Linear (% Residents Restrained Unduplicated)

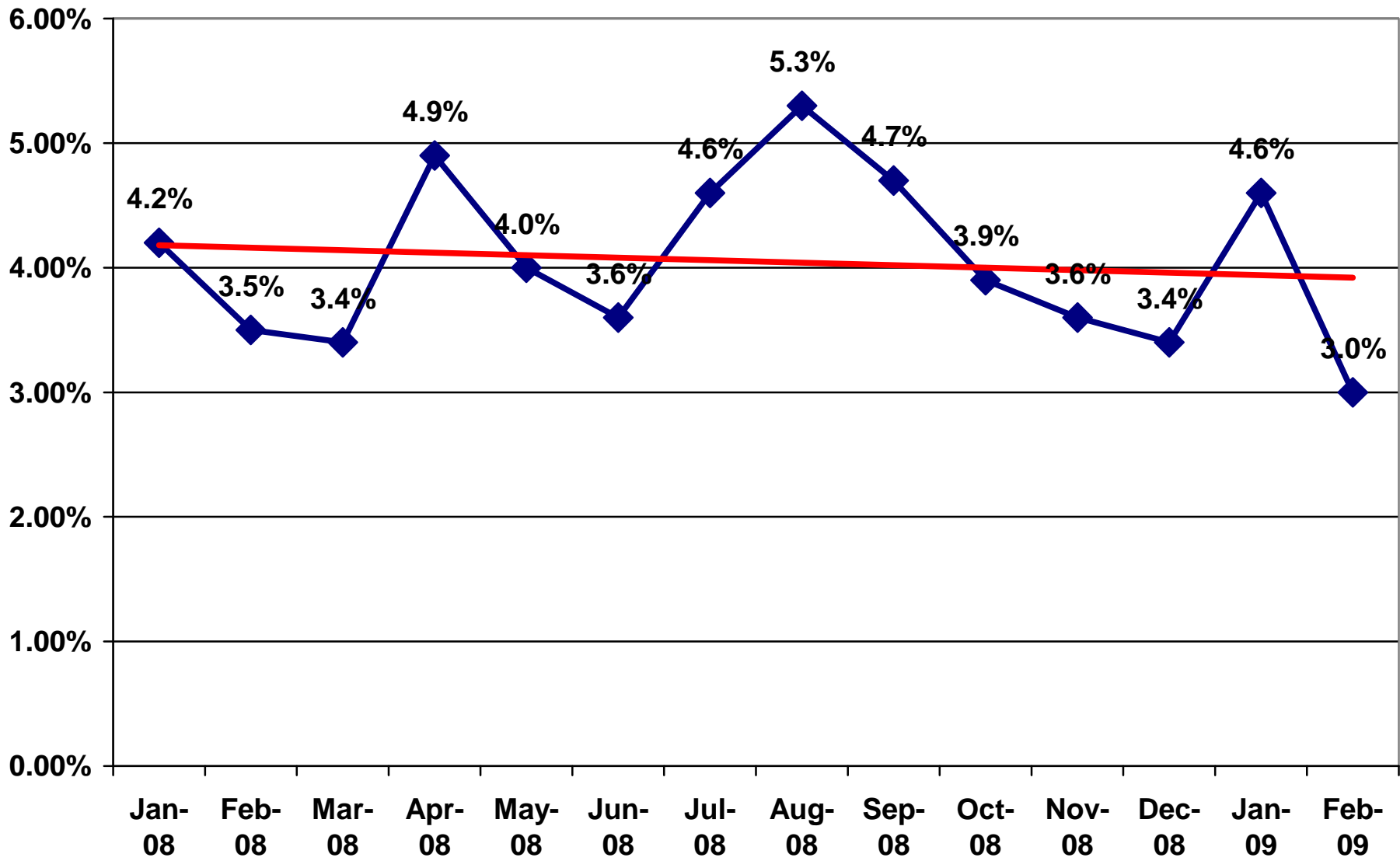
ALL FACILITIES FOR MONTHS THEY HAD DATA



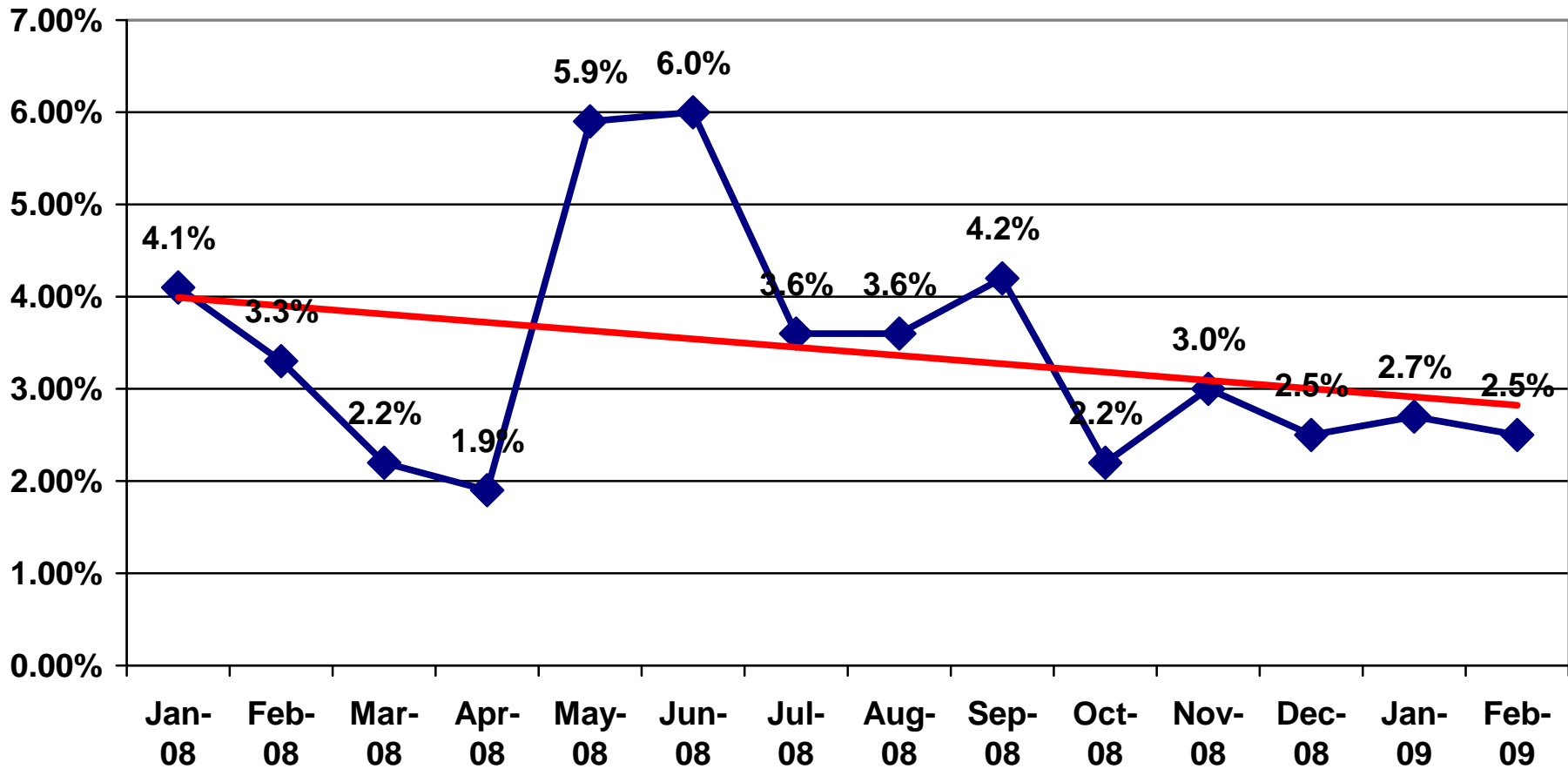
NOTE: Average number of restraints per residents actually being restrained has remained fairly flat.



- ◆ Average Number of Discharges to Less Restrictive Environments per 100 Residents
- Average Number of Discharges to Same Restrictive Level per 100 Residents
- ▲ Average Number of Discharges to More Restrictive Environments per 100 Residents
- Linear (Average Number of Discharges to Less Restrictive Environments per 100 Residents)
- Linear (Average Number of Discharges to More Restrictive Environments per 100 Residents)
- Linear (Average Number of Discharges to Same Restrictive Level per 100 Residents)



◆ % Direct Care Staff Who Left Employment — Linear (% Direct Care Staff Who Left Employment)



◆ % Supervisory Staff Who Left Employment — Linear (% Supervisory Staff Who Left Employment)